

Legends



Instruction: additional instruction for software



Note: the problems which may occur during your using of the board and how to resolve and avoid them.



Warning: Harm to human body may occur in the course of using, or damage to the product may occur due to the improper use of the product.

Caution Note



- To avoid electric shock, please do not install the IPBOARD ultra at humid locations or locations with smoke!
- After the IPBOARD ultra is installed, do not touch its power cable or data cable!
- Keep the IPBOARD ultra away from fire, electric shock and direct sunlight!
- After the IPBOARD ultra is installed, make sure the IPBOARD Ultra is firmly fixed!



When the IPBOARD ultra is used together with the projector, do not directly watch the light beam sent from the projector.



Important note

- Only erasable IPBOARD ultra can be written on with pen of color (including normal IPBOARD Ultra markers and so on), while for other kinds of boards only using the electronic pens of the IPBOARD Ultra.
- Please make sure the IPBOARD Ultra is correctly connected with the computer, and normally powered. It is preferable that the connection cables and power cables be hidden for the wiring so as to prevent the cables from being pulled or drawn.



General note

- Environment around: there must be no intense magnetic field
- If the IPBOARD ultra is fixed on the wall, it must be vertical to be the wall surface.
- Do not scratch the surface or frame of the super board with sharp or hard objects
- When writing on the board with the electronic pen, please keep the pen upright to the board and write lightly.

Contents

LEGENDS	1
CAUTION NOTE	1
CONTENTS	3
INTRODUCTION	4
BRIEF INTRODUCTION	4
SYSTEM REQUIREMENTS	5
UNPACKING IPBOARD ULTRA	6
1、 IPBOARD ULTRA	6
2、 STANDARD ACCESSORIES	7
DESCRIPTION OF APPEARANCE	8
INSTALLATION	9
1、 INSTALL THE IPBOARD ULTRA	9
2、 CONNECT THE IPBOARD ULTRA	9
3、 INSTALL BATTERY OF ELECTRONIC PEN	9
4、 EXPRESS INSTALLATION OF THE IPBOARD ULTRA SOFTWARE	10
5、 STEP-BY-STEP INSTALLATION OF THE IPBOARD ULTRA SOFTWARE	12
6、 INSTALL USB — RS232 CONNECTION CABLE DRIVER	14
RUN THE SOFTWARE	16
1. STARTUP DRIVER OF IPBOARD ULTRA	16
2. ORIENT THE IPBOARD ULTRA	16
3. STARTUP APPLICATION SOFTWARE OF IPBOARD ULTRA	17
3. DESCRIPTION OF THE NORMAL FUNCTION ON THE MOVING TOOL BAR	18
4 CREATE AN INDIVIDUAL ACCOUNT AND PASSWORD	19
5 DESCRIPTION OF THE MULTI-SCREEN FUNCTION AND THE FULL-SCREEN FUNCTION	21
TROUBLE SHOOTING	24
PERFORMANCE INDEX	26

Introduction

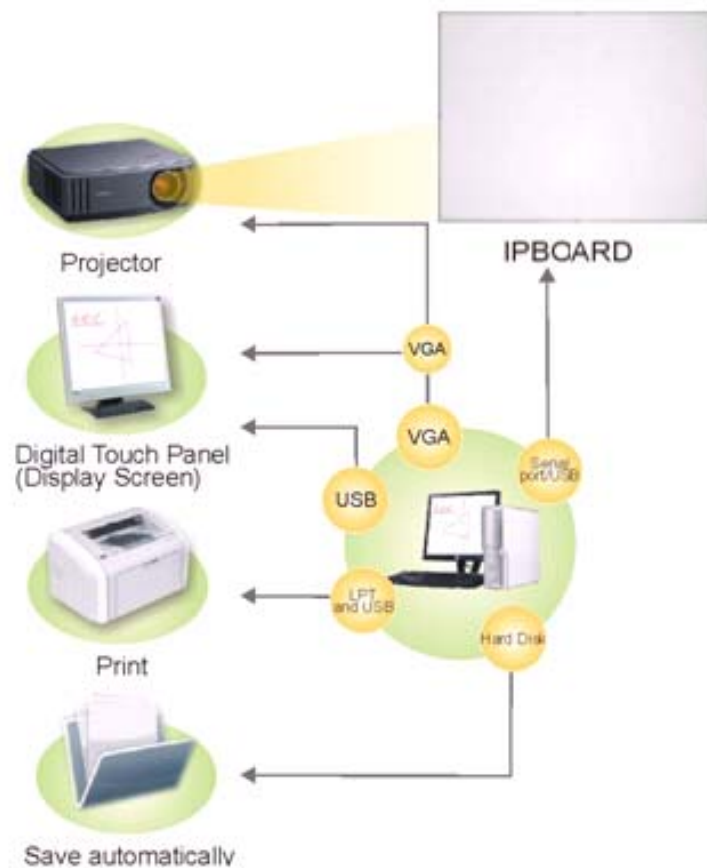
Brief Introduction

The IPBOARD ultra is designed based on the fact that the PC is an input - equipment with the function of facilitating the communication between the users and the PC itself. It consists of the sensing IPBOARD Ultra and the interrelated application software.

The electromagnetic sensing IPBOARD Ultra can detect the accurate position of the writing of the electronic pen. Meanwhile, it can transmit the information to the connected computer simultaneously. The integration of the reflected information and the images on the computer can be projected on the IPBOARD ultra via the projector. Consequently, through the surface of the IPBOARD Ultra, user can realize the functions such as controlling the computer, writing, annotation, drawing geometrics, printing and storing, which can help establish a sound interactive presentation system.

The IPBOARD ultra can solve the problems of the current mega – sized screen in terms of its interactive operation and writing. Therefore, it is suitable for and widely used in the large-sized classroom, auditorium and meeting room, eliminating the limitations of the traditional large screen and expanding the application areas tremendously. In addition to the normal writing, it can present the different pages on different screens, prolong the time for demonstration, and be convenient for content review.

The formation of the whole system is as follows:



The screen of the IPBOARD Ultra consists of one writing board and three displaying boards. The screen on the low-right side is for writing, and another three are for displaying. The writing board can be connected with the computer through the VGA, the USB or the wireless communication module. The software in the computer can handle the collected information, and present them on the screen by the projector.

System Requirements

	Minimal configuration	Suggested Configuration
Hardware Configuration	CPU: 1GHz	CPU: 1.7 GHz or more
	RAM: 256 MB	RAM : 512 MB or more
Software configuration	Microsoft Internet Explorer 6.0.0	Microsoft Internet Explorer 6.0.0
	Windows2000, XP、 Vista	Windows2000, XP、 Vista

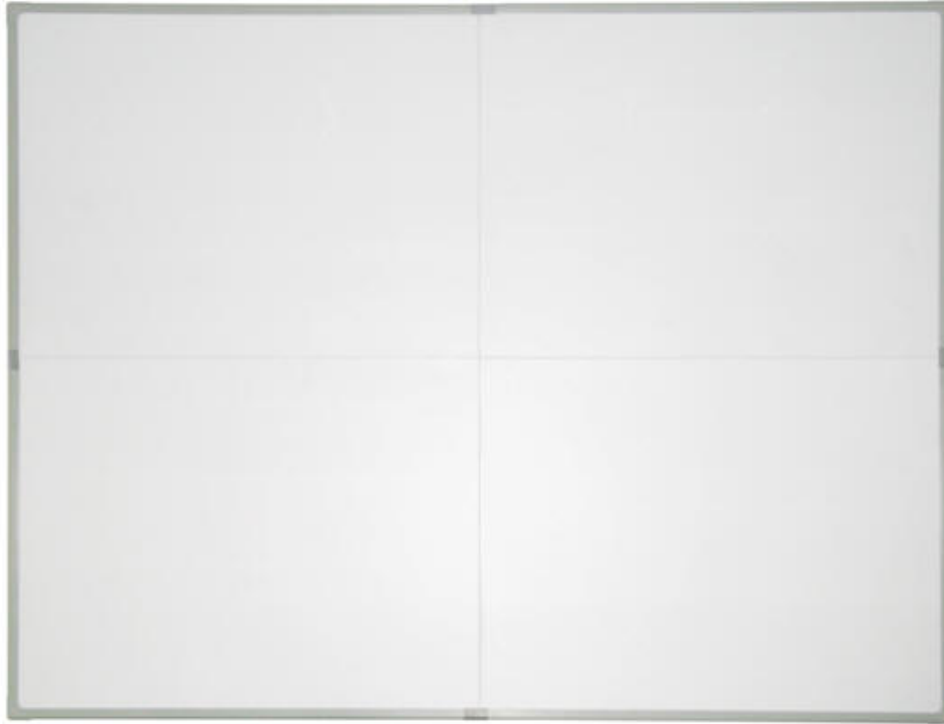
Unpacking IPBOARD Ultra

A set of IPBOARD ultra contains the following components:

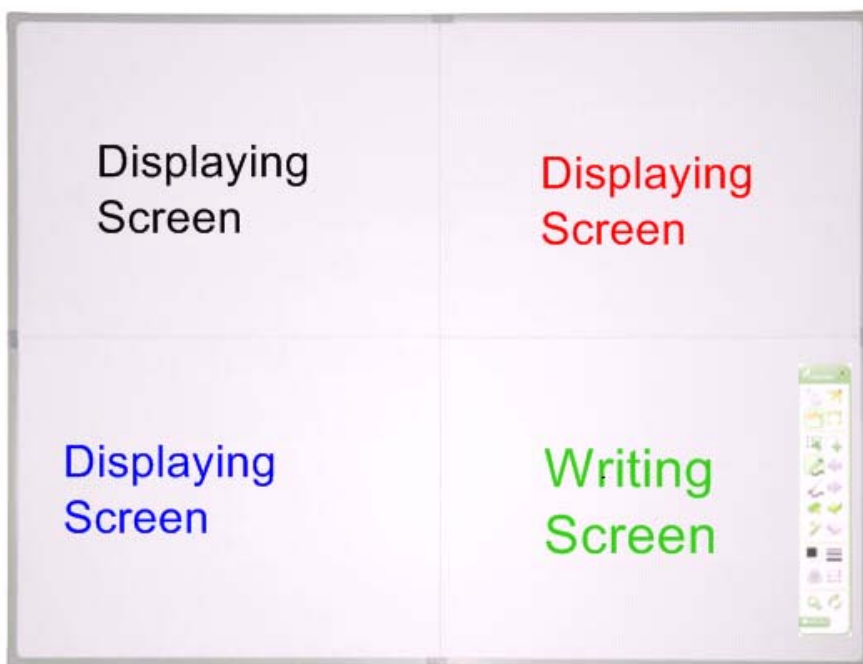
1、 IPBOARD Ultra

The screen of the IPBOARD ultra is made up of one writing board and another three displaying boards.

Each board should be installed in the corresponding position and the order can not be changed at installation.



The positions of each board are as follows:

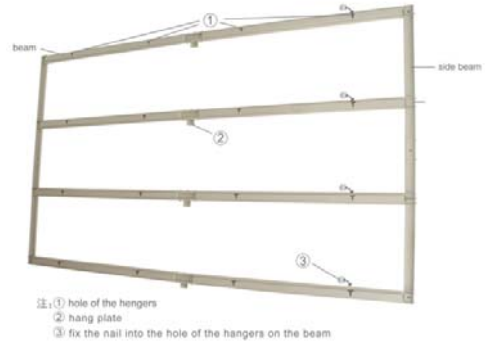


2. Standard Accessories

A set of standard accessories contained in the pack of the IPBOARD ultra is as follows:

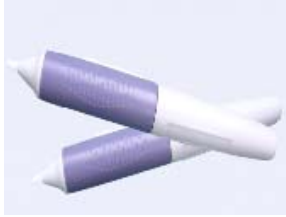



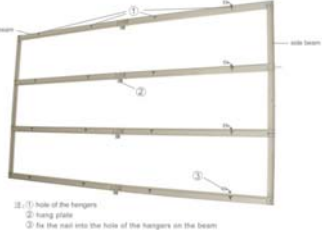


Accessories



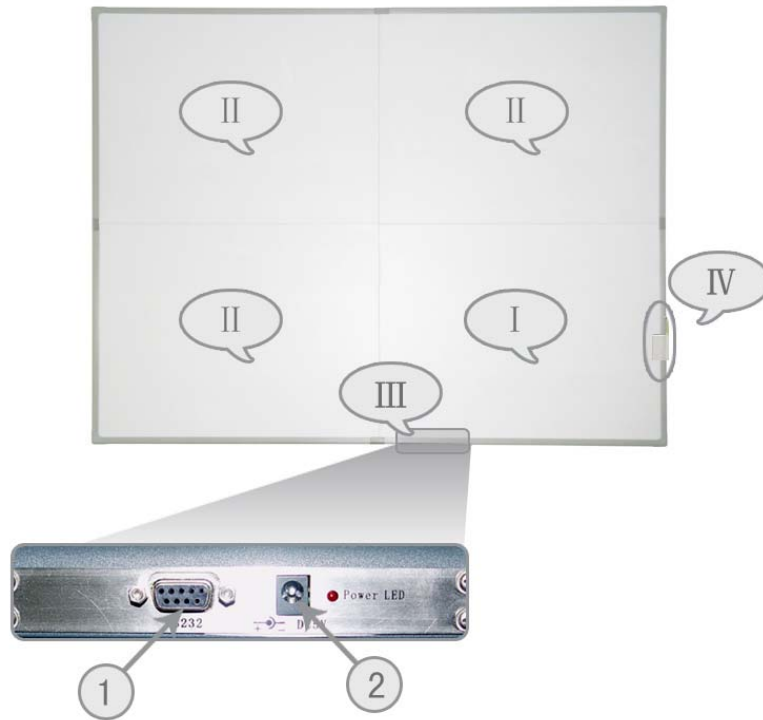
Installation Hanger


Standard Accessories include:

Description	Quantity	Purpose	picture
electronic IPBOARD ULTRA pen	2	The pen specially designed for IPBOARD Ultra, with Type-7# batteries of 1.5V.	
USB-RS232 connecting cable 10 meters	1	The dedicated cables connecting computer and IPBOARD Ultra	
《IPBOARD ULTRA Install Software》 Disc	1	drive and application software	
《IPBOARD Ultra User Guide》	1	User Guide	
Connector	10	Install the IPBOARD Ultra Board	

Description of Appearance

- Appearance of IPBOARD Ultra:



	<p>I : Writing screen; II : Displaying screen; III: Interface board; IV: Pen container</p>	<p>① Serial port ② Power Socket</p>
---	---	--

Installation

1、 Install the IPBOARD Ultra

Please see <<the introduction of installing the IPBOARD Ultra>>

2、 Connect the IPBOARD Ultra

- Connect it to USB port of PC , USB supply DC Power



- 1) Fix the IPBOARD Ultra.
- 2) Connect the IPBOARD ultra to PC using USB to RS232 cable.



The IPBOARD ultra and PC should be power off when processing all connections!!!

3、 Install Battery of Electronic Pen

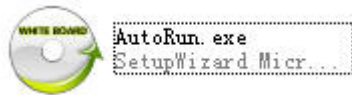
Turn the rear cap of the electronic pen counter-clockwise to open it, load one 7# 1.5V battery according to the following figure, then tighten the rear cap clockwise.



4. Express Installation of The IPBOARD ultra Software

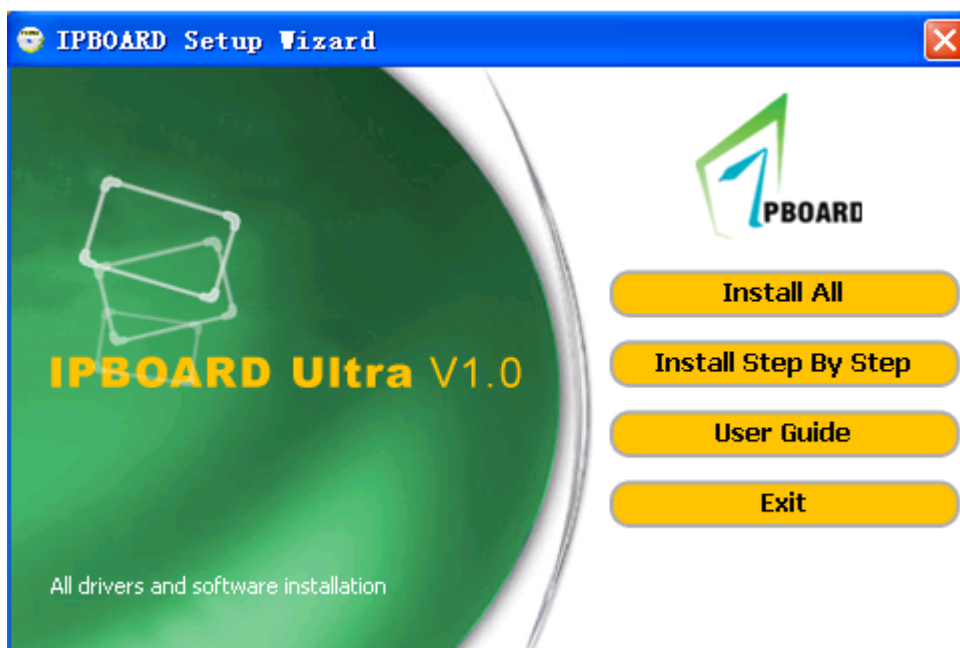
This installation option is recommended for first time installation of the software.

4.1) Insert 《IPBOARD Ultra Software》 disc;



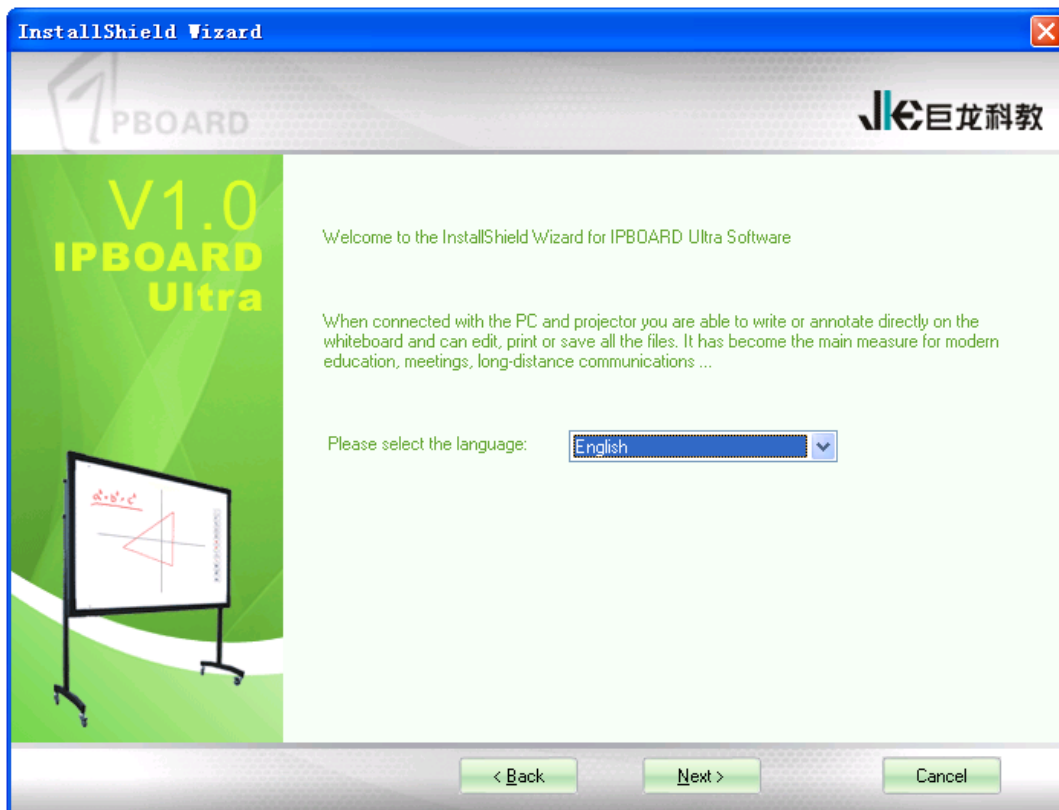
4.2) Click program logo:

4.3) Proceed to Installation Guide window.

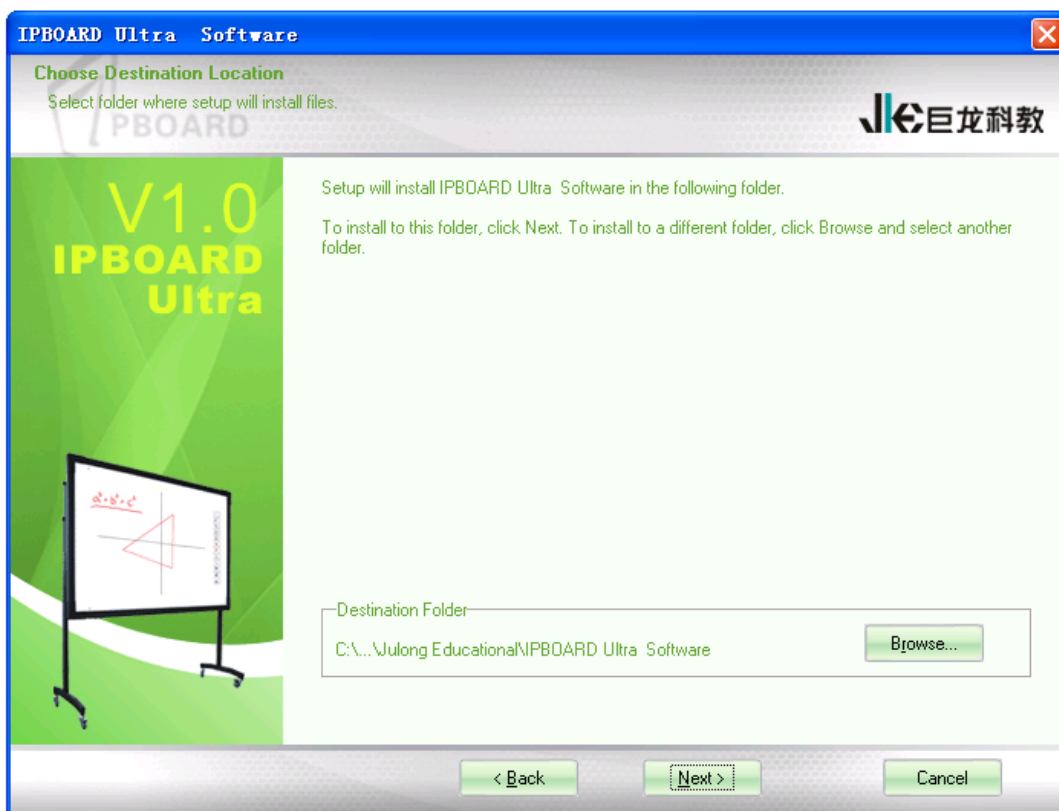


4.4) Click  to install driver for the IPBOARD Ultra;

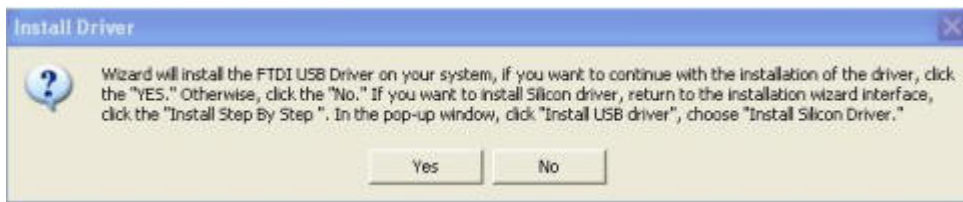
4.5) Choose the language that needed to be installed.



4.6) Select the path for installation.



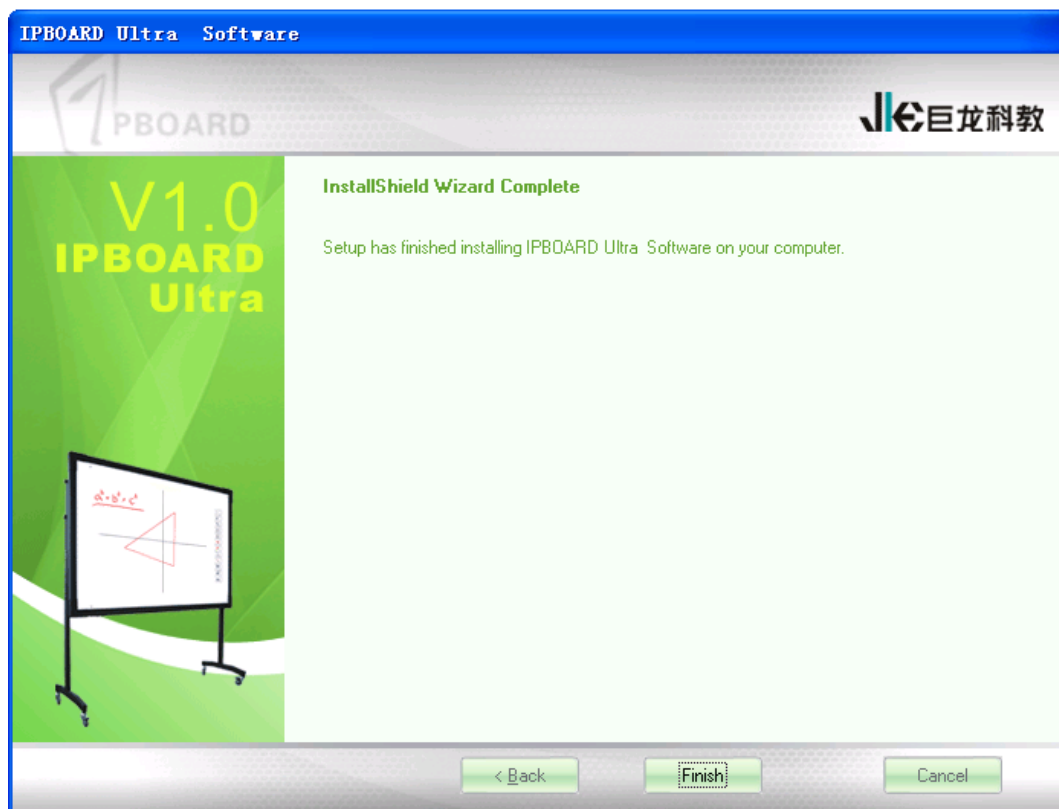
4.7) After the software installation is completed the system will install the USB driver. If the USB cable provided with the IPBOARD ULTRA is white, click “Yes” to complete the installation of the USB driver. If the USB cable is black, click “No” and proceed to **Install Step By Step** → **Install USB Driver** → **Install Silicon Driver** to install the driver.



4.8) After the driver installation is completed connect the USB cable to the PC to complete the whole process.



4.9) Complete installation.



5. Step-by-step Installation of the IPBOARD Ultra Software

This installation option is recommended when upgrading IPBOARD Ultra software or replacing the USB cable.


5.1) Follow 4.1) — 4.3) to enter installation guide window.

5.2) Click **Install Step By Step** to install IPBOARD Ultra driver, IPBOARD Ultra software and USB cable by following the step-by-step guide.

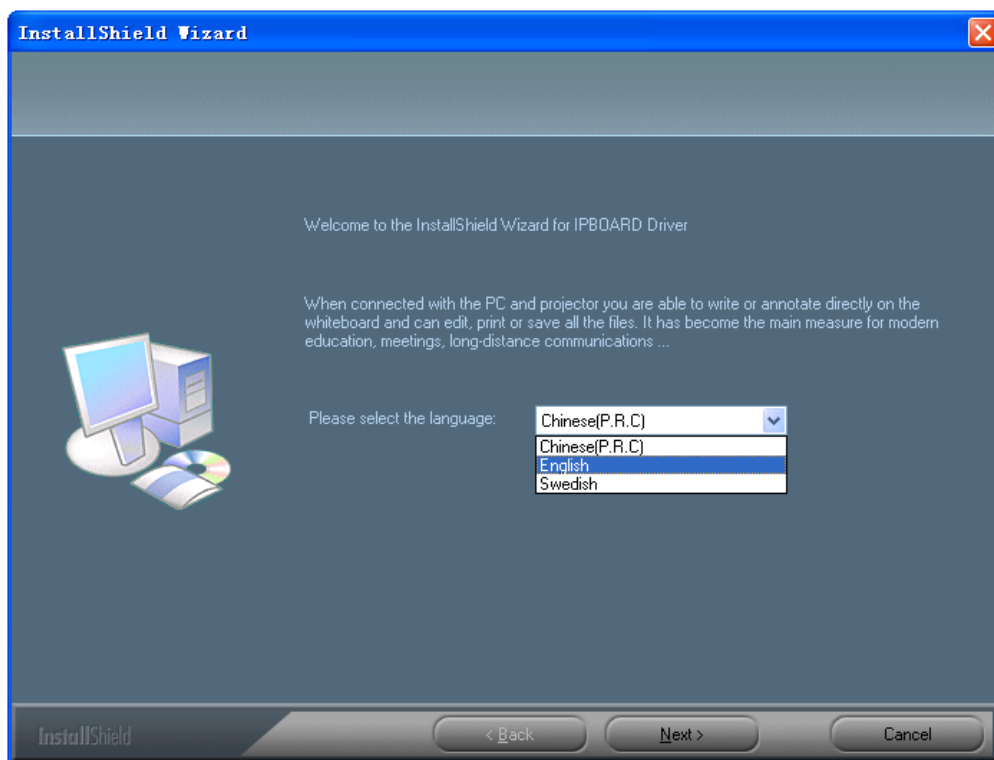


5.3) Install IPBOARD Ultra Drive

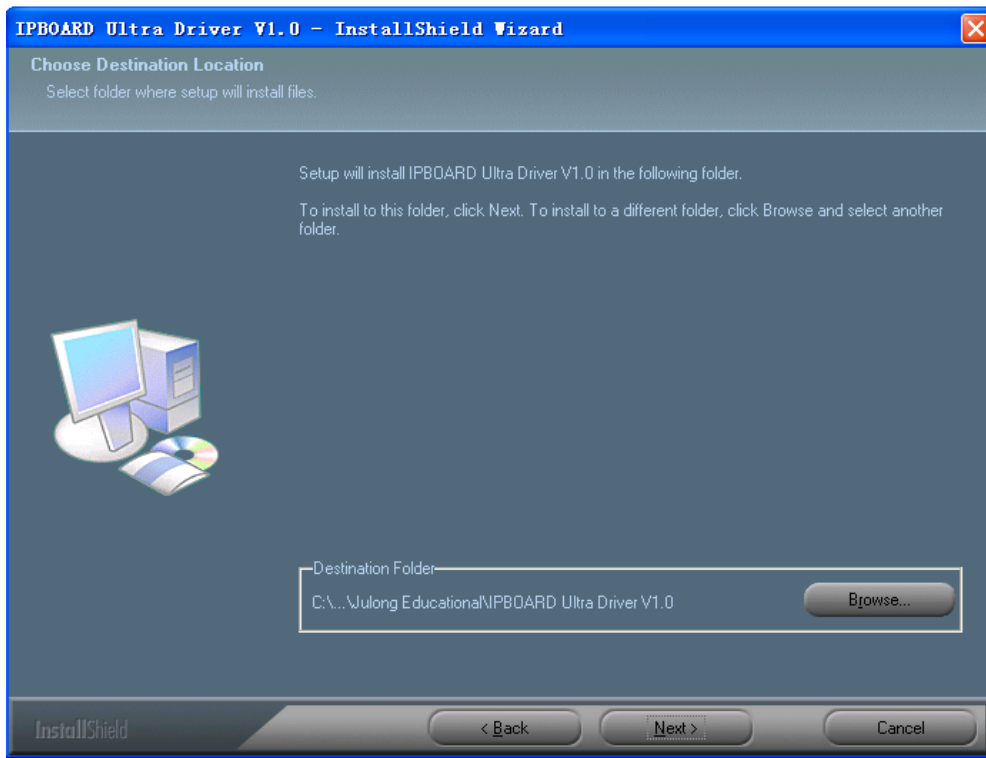


5.3.1) Click  to install driver for IPBOARD Ultra;

5.3.2) Choose the language that needed to be installed.




5.3.3) Select the path for installation.



5.3.4) Complete installation.

5.4) Install IPBOARD Ultra Software



Click  and follow 4.5) — 4.8) to complete the installation.

6. Install USB—RS232 connection cable Driver

There is no need to repeat this step when using Express Installation. This step is only required when using Step-by-step Installation.



If USB-RS232 connection cable is used, the corresponding driver must be installed.



Click

Install USB Driver

to install the driver for USB-RS232 cable.


6.1) Installation of white USB-RS232 cable

If the USB cable provided with the IPBOARD Ultra is white, click **Install FTDI Driver** to install the driver.

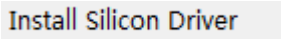


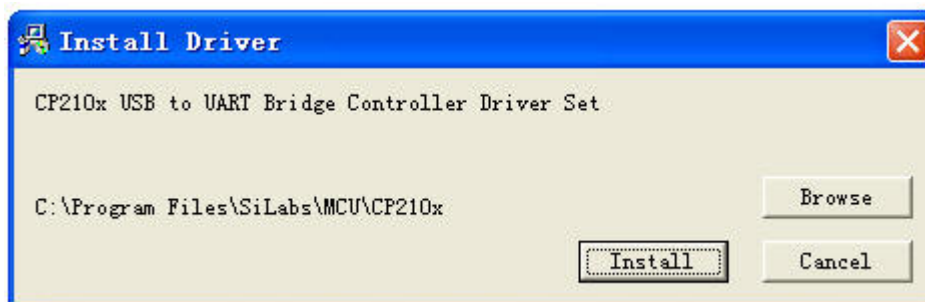
After installing correctly “My Computer” → “Properties” “Hardware” → “Device Manager” “Port” are shown as the device “USB Serial Port”



 After installation of USB-RS232 cable is completed, plug-in the USB cable, and to check the COM number of the USB Serial Port in “My Computer”→ “Properties” → “Hardware” →“Device Manager” → “Port” and to make sure that the COM number is less then 10 and the baud rate is 19200.

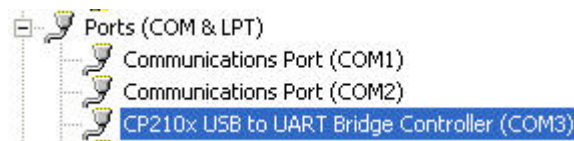
6.2) Installation of black USB-RS232 cable


If the cable provided with the IPBOARD Ultra is black, click  to install the driver.



click  and begin to install USB-RS232 cable until complete installation





After installing correctly in “My Computer” → “Properties” →“Hardware” →“Device Manager” “Port” can see the device “CP210X USB to UART Bridge Controller



 After installation of USB-RS232 cable is completed, plug-in the USB cable, and to check the COM number of the CP210X USB to UART Bridge Controller in “My Computer”→“Properties”→“Hardware”→ “Device Manager”→“Port” and to make sure that the COM number is less then 10 and the baud rate is 19200.

Run the Software


1. Startup driver of IPBOARD Ultra

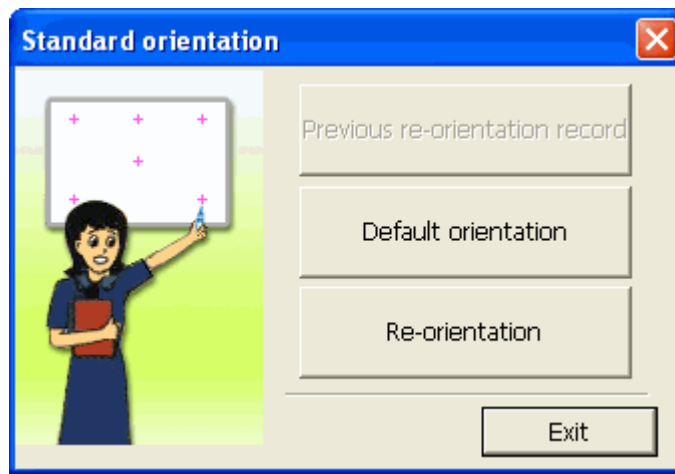
Click "Start" → "All programs" →  "Julong Educational Software" →  "IPBOARD Ultra Software" →  "IPBOARD Ultra Driver", and start IPBOARD Ultra driver. It will show a tray icon of communication module  in status bar lower-right corner of desktop.



If it shows "Communication with board failed", please make sure that the connecting cable and IPBOARD ultra is correctly connected and the driver for the USB cable has been correctly installed. Then please click the IPBOARD Ultra Driver icon in the tray and select "Reconnect IPBOARD Ultra" in the pop-up manual.


2. Orient the IPBOARD Ultra

- 1) Click tray icon  of IPBOARD ultra by left key of mouse, select "**Orientation**" on the popup menu to enter locating interface of IPBOARD Ultra, and select one locating mode required, as shown below.






- 2) Left click "**Re-orientation**", it will popup window of Orientation, click central position of the flashing sign"十" using electronic pen. Click it following prompt (there are six orientation points in all, left up, right up, right down, left down, top up and middle).as shown below:






- ◆ Please select "**Re-orientation**" when the first time to install IPBOARD Ultra or position of hardware unit (projector and IPBOARD Ultra) has been changed.
- ◆ You can have a fast orientation by selecting "**Previous re-orientation record**" so as to ensure accuracy, if there are no hardware changes since last time.
- ◆ When no need for accurate orientation, you can select "**default orientation**".

3. Startup application software of IPBOARD Ultra

- 1) Click "**Start**" → "**All programs**" → " Julong Educational Software" → " IPBOARD Ultra Software" → " IPBOARD Ultra Software", and startup application program, then it will popup a Logon window as shown below



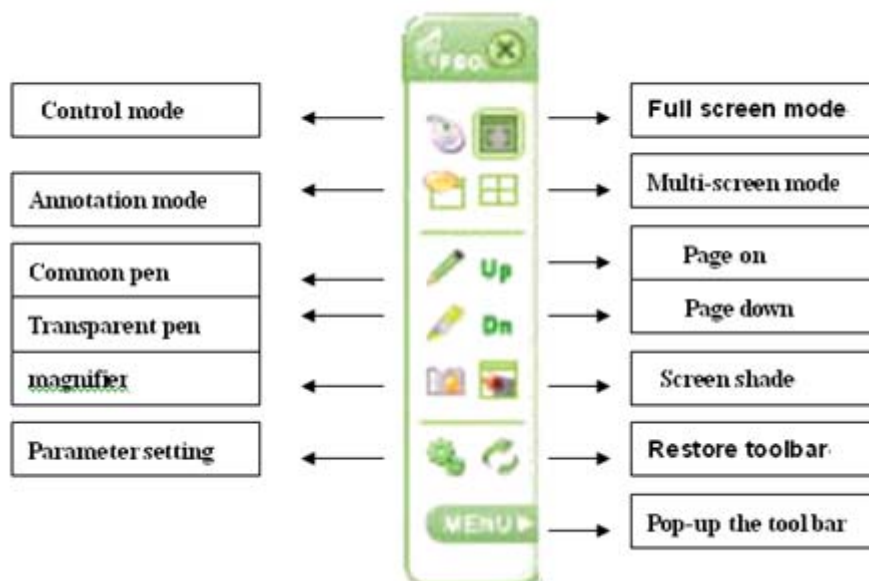
- 2) Users can use default user account or their individual accounts to log-in IPBOARD Ultra Software. Users are able to create customized toolbar, resources and templates if they are using their individual accounts.



Ensure the connection between IPBOARD ultra and PC is good and driver of IPBOARD ultra is running before starting up application software. if not, application program will not startup normally .

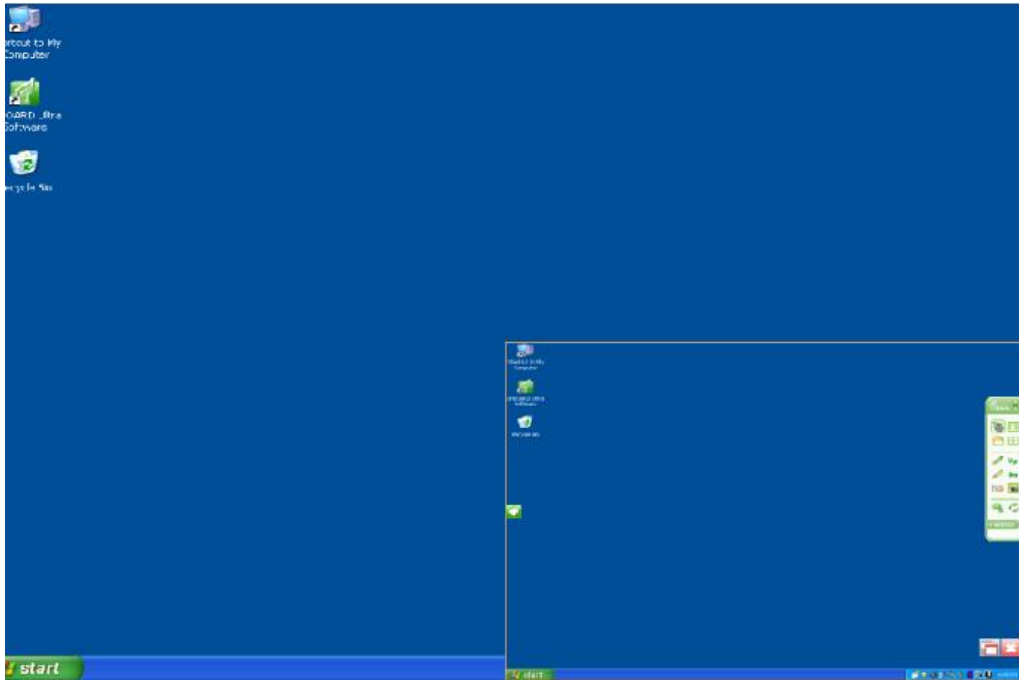
3. Description of the normal function on the moving tool bar



- 1) Run the software of the IPBOARD Ultra; enter the control mode, and the moving tool bar will appear within the area of the writing screen.



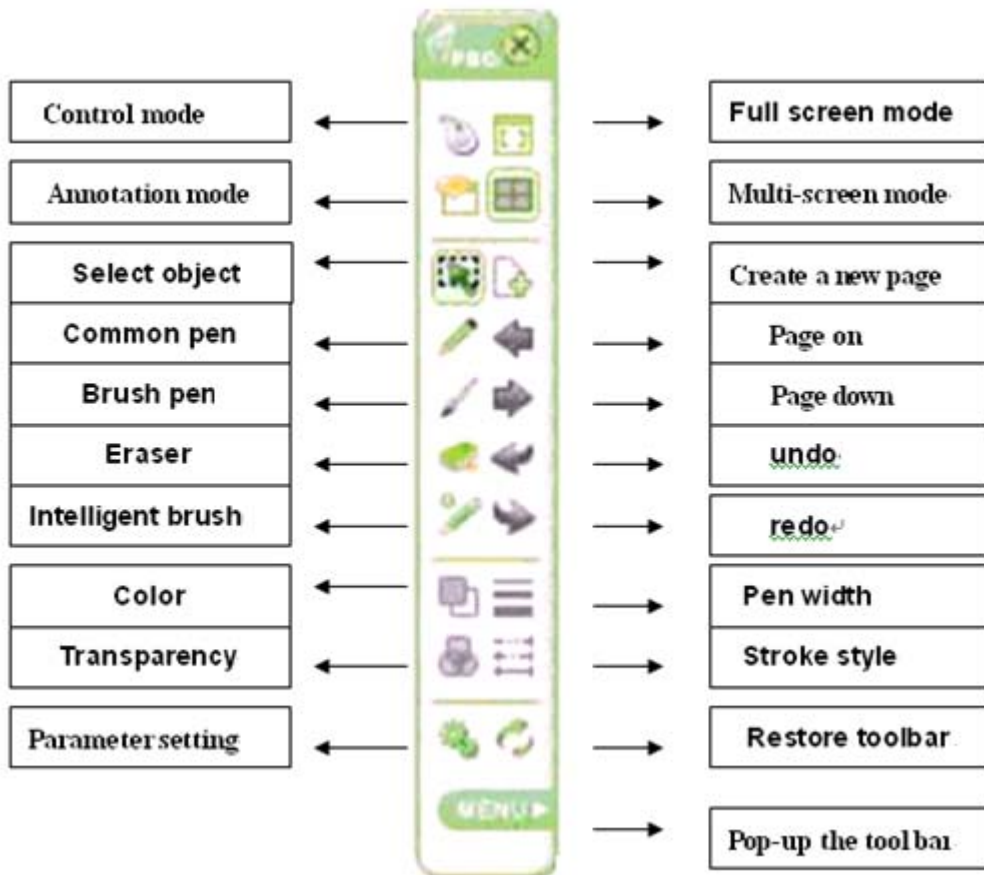
- 2) By clicking the  , the operation will enter the "Control mode" on the writing screen with the small-sized

icon; click the related icon, the user can realize the function of controlling the computer.





By clicking the  or the , the user can quit the “Control mode”.

3) By clicking the “Full screen” mode, or the “Annotation” mode, the system will enter the related mode respectively, and the original tool bars of these two modes are as follows:



4 Create an individual account and password

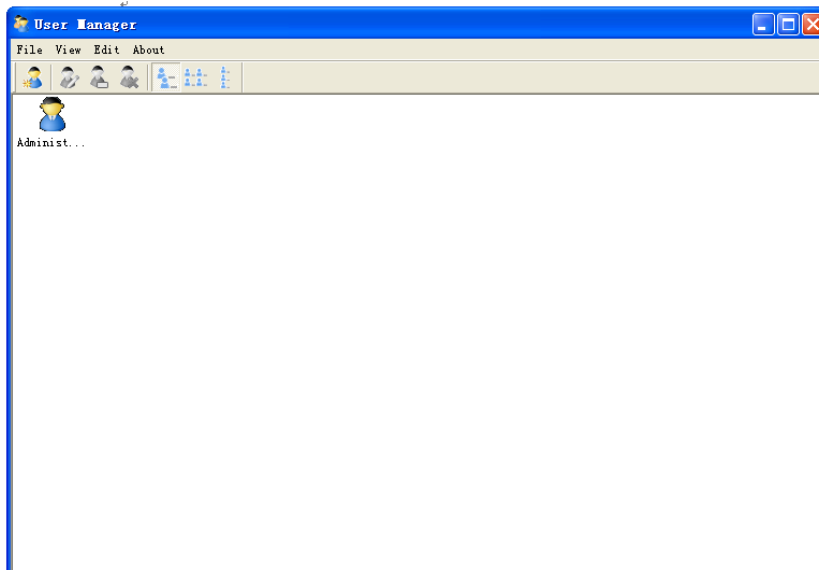
1) Click “Start” → “All Programs” → “ Julong Educational Software” → “ IPBOARD Ultra Software” →

and will pop-up the following window:



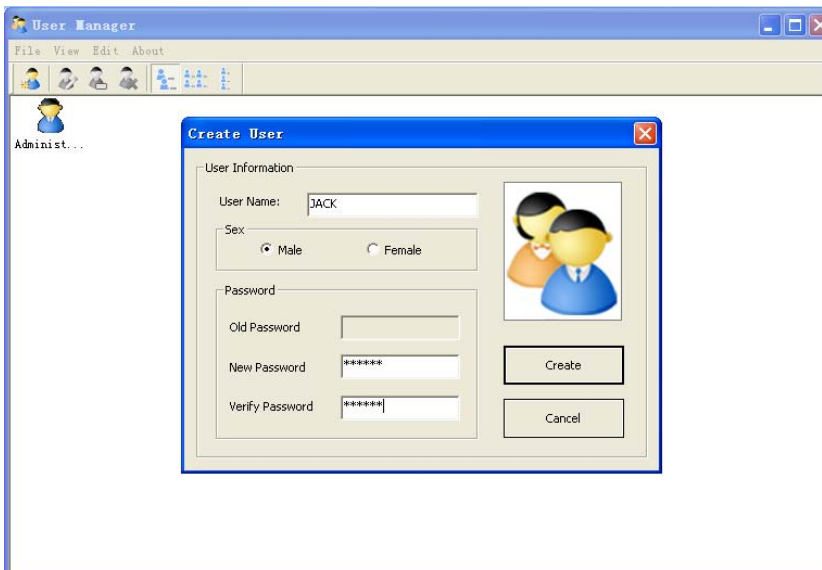
Key-in the administrator account to enter the software. Default administrator account is: **Administrator, Password: julong.**

2) Enter the User Manager window

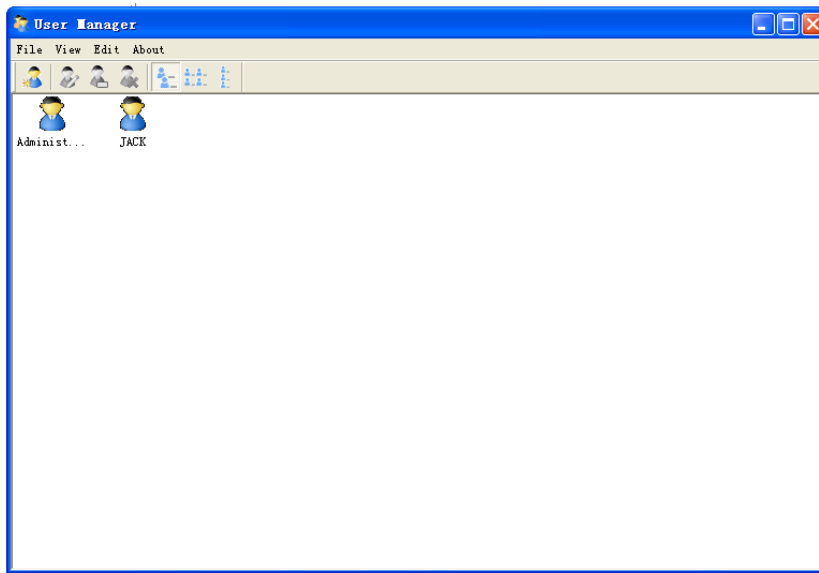


3) Select "Edit" → "New User" to create an individual account.


4) Key-in the user name and password and select Create.



5) The new user will be displayed in the window after the process is completed.:



5 Description of the multi-screen function and the full-screen function

	<ul style="list-style-type: none">◆ Multi-screen: the content can be presented on four uniform boards; and it can present four different pages of four IPBOARD ultra simultaneously.◆ Full-screen: the panel content of the IPBOARD Ultra only appears on the page of the writing screen.
---	--

- 1、 By clicking the “Control mode”, the display will be full-screen automatically; the user can control the computer via the electronic pen on the writing board, and the tool bar can only be moved within the writing area.
- 2、 By clicking the “Annotation mode”, the current content will be presented on the writing screen automatically, with the background of the content on the computer page; the user can annotate under this mode.

Export

Save as POWERPOINT, PDF, html, files and print out hard copy.



Remote Interaction

Long-distance Meeting & Education



JALONG EDUCATIONAL TECHNOLOGY CO.,LTD

IPBOARD-Features

- Easy-to-use
- Stable
- Durable
- Multilingual
- Free Software-updating
- Eco-friendly



JALONG EDUCATIONAL TECHNOLOGY CO.,LTD

IPBOARD-Application

Classroom Teaching

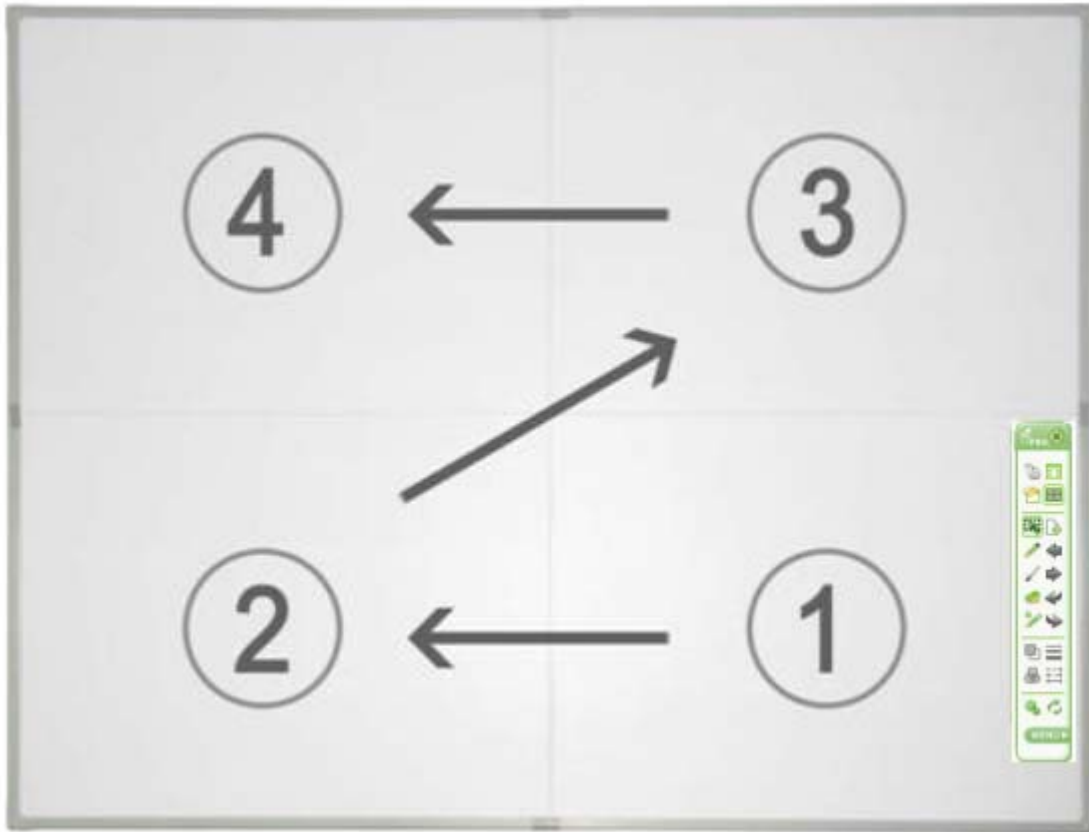



Screen Pass







Fullscreen

- 3 、 By clicking the “Full screen” mode, the user can create a new page, and the user can carry out the multi-screen display by operating on the writing screen.
- 4 、 When created a new page, the screen can move from the low-right area, to the low-left area, to the up-right area, and to up-left area orderly.



5、 Under the “full-screen” mode, the multi-screen display can be resumed by clicking the 

6、 By clicking the  , the user can realize the function of moving the page from the displaying screen to the writing screen; move the page on the up-left area to the writing screen by clicking  ; realize up-low move by clicking  ; realize left-right move by clicking  .

Trouble Shooting

1. If it shows “Failed to verify the IPBOARD ULTRA, the program can't run further!” please check whether there is a good connection between IPBOARD ULTRA and PC.”

- Please check whether having used special-purpose gorge line of IPBOARD ULTRA, and whether there is a good connection for gorge line.
- When connection is made through the USB2.0 to RS232C cable, check whether it is correctly connected with special-purpose gorge line.
- Check whether the IPBOARD ULTRA is power-on (It is normal only when the red indicator lamp on plug socket of power lightening).
- Check whether serial ports from COM1 to COM10 have been occupied, and you must select one serial port from COM1 to COM10 for IPBOARD ULTRA.
- Check whether driver of IPBOARD ULTRA has been setup correctly.

2. When startup software, it shows “Error happen when Loading XML File”.

Check the version of Internet Explorer, upgrade IE to version 6.0 when it is 5.0 or lower.

3. Only part of WHITEBOARD can be written on.

The writing can be done only within the area of the writing screen.

Check whether orientation of IPBOARD ULTRA is correct.

4. Some orientation points can not found when orienting the IPBOARD ULTRA.

Check whether lateral deviation and vertical offset of projector are correct. Ensure all content on PC screen can be projected wholly to IPBOARD ULTRA.

5. Electronic pen can not write normally.

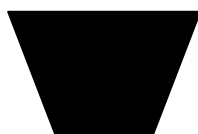
- Check current working mode of software. Writing is effective only under Draw Mode or Annotation Mode, and not effective under Control Mode.
- Do not press button on electronic pen when writing.
- Please keep the neb of electronic pen is vertical to panel of IPBOARD ULTRA.
- You should not press the electronic pen tightly.
- Check whether the battery is full of power, if not, replace new ones.

6. How to exit from software of IPBOARD ULTRA?

- Click icon button of "Pop Menu" on Floating Tool Bar, click "Exit" in the pop up menu.
- Or click "File"(on main menu)→“Exit”.

7. Why image Projected is shape of trapezium? why to adjust it, and how to adjust it?

- It may be that projector is not level (like, the front is higher than the back or the back is higher than the front),so a trapezium appears.
- The image will be in distortion when a trapezium appears, so you must adjust it to normal condition.
- Generally, it can be adjusted by using a remote manipulator or to adjust height of projector. For details, please refer to user's manual of projector.



Trapezia



Rectangl@4

8. What type of projector is needed to match with the IPBOARD Ultra?

The projector shall satisfy with three items as below.

- 1) Front projector
- 2) Support resolution of PC
- 3) Least luminous power shall be more than 3000 Lumina, for detail requirements, please refer to size of room.

9. How to do it when serial port is occupied.

Both table model and notebook PC allow to add some new serial port, there are two ways to select

- Install a serial port card on PC (note: generally, PCMCIA serial port card for notebook PC)
- Using "USB2.0 to RS232C+ special designed gorge line" to connect IPBOARD ULTRA with PC together.

10. Can 25-pin serial port replace 9-pin serial port?

Yes, but only you have installed an adapter from 25 to 9 pins on PC.

11. What to do when having used an un-erasable and unctuousity color pen to write on IPBOARD ULTRA.

Never use unctuousity color pen writing on IPBOARD ULTRA! Once you have done it, clean it lightly using absorbent cotton dipped with alcohol.

12. How to clean the panel of IPBOARD ULTRA?

Clean the panel lightly using a piece of cleanly damping cloth.

Attention: you have to wring out the damping cloth, there are must not be floating water, and you must prevent some water infiltrating into internal side of IPBOARD ULTRA.

Performance index

Hardware Platform	Common PC, notebook PC
Operation System	Windows 2000/XP/Vista
Transmission Interface	RS-232C/USB / Wireless Module
Resolution	8192×8192
Data-signaling rate	19200Baud Rate
Operating Principle	Wireless electromagnetic induction
Operate Mode	Control Mode/ Annotation Mode./Full-screen Mode/Multi-screen Model
USB Power Supply	DC 5V 100mA Or Powered by external 5V adapter
Service life of battery of electronic pen	Different service life for different battery, common alkaline battery can endures three months
Working Temperature	-20℃ ~ +55℃
Power capability	< 2W